

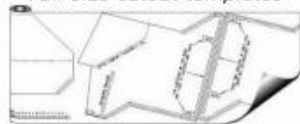


Ultimate Arcade II®

The Ultimate Gaming Experience



*Illustrated Step-by-step plans
Full-size cutout templates*



www.MameRoom.com

The **MameRoom.com** is the online resource for custom arcade and jukebox enthusiasts. Whether you are an experienced cabinet builder or just starting out, the MameRoom offers fully illustrated, step-by-step construction manuals and kits that are easy to understand and follow.

Locate video arcade games, mame roms, and other free games...



Ultimate Arcade I®



*Illustrated Step-by-step plans
Full-size cutout templates*



www.MameRoom.com

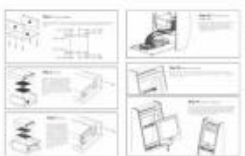
Links and information on custom gaming equipment, manufacturers, and pre-built cabinet vendors...

Custom gaming and jukebox related software to enhance any gaming system...

Online community and resource center to communicate with other gaming enthusiasts...



Virtual Music Jukebox

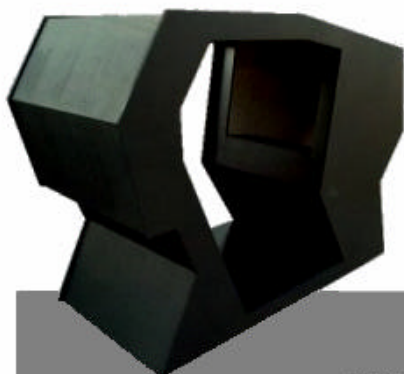


*Illustrated Step-by-step plans
Full-size cutout templates*



www.MameRoom.com

For more information please visit:
www.MameRoom.com



Ultimate Arcade Cockpit®

*Illustrated Step-by-step plans
Full-size cutout templates*



www.MameRoom.com



Ultimate Arcade

By CyberTech Design

www.cybertechdesign.net

I. Disclaimer

While the information provided in this document is believed to be accurate, it may include technical inaccuracies or typographical errors. CyberTech Design does not guarantee satisfactory results from reliance upon any such information, and disclaims all liability for loss or damage of any kind arising out of its use. The information contained within this document is for the construction of the Ultimate Arcade II "cabinet" and does not include information on electrical components. Please refer to the equipment's installation manual for assembly/installation procedures.

This publication is provided "AS IS" and CyberTech Design does not MAKE ANY EXPRESS OR IMPLIED REPRESENTATION OR WARRANTY AS TO THE FITNESS, MERCHANTABILITY OR ANY OTHER MATTER WITH RESPECT TO THE PRODUCTS, PROCESSES OR EQUIPMENT OR ANY MANUFACTURER OR SUPPLIER REFERRED TO HEREIN, OR ANY PRODUCT OR EQUIPMENT MANUFACTURED, PRODUCED OR SOLD BY ANY SUCH MANUFACTURER OR SUPPLIER, whether used alone or in combination with any other product, materials or equipment.

Before adopting any of the recommendations or suggestions contained herein, we urge you to determine for yourself whether the advice or procedures should be adopted for your use. Nothing contained herein is to be construed as a recommendation to use any information, product, process or equipment in conflict with any patent trademark.

The information (including, without limitation, the photographs and artwork) contained in this document may not be distributed, modified, reused, reposted, or otherwise used without the express written permission of CyberTech Design.

II. Before you begin

It is highly recommended that you measure all doorways and stairways leading to where your Ultimate Arcade cabinet will be placed. Be sure to read through this entire document before assembly.

IMPORTANT: REMOVE TELEVISION OR MONITOR BEFORE TRANSPORTING THE ULTIMATE ARCADE CABINET. The assembly of the Ultimate Arcade cabinet requires two or more people. Never work alone. The fabrication and assembly of the Ultimate Arcade cabinet requires a basic knowledge of power tools and woodworking skills.

III. Tools required

Please use safety goggles when cutting materials and during assembly.

- Electric router
- Circular saw/Jig Saw
- Drill Bits (3/8", 1/8", 1/16", 2" hole saw)
- 3/8" Drill Bit Stop Collar
- Paint roller
- Paint tray
- Screwdriver (Phillips)
- Tape measure/ruler
- Pencil / Pen
- 1/16" slot cutting router bit
- Laminate cutting router bit
- Caulk gun
- J-Roller (Rubber roller)

Materials List

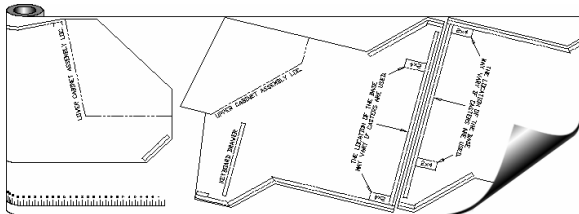
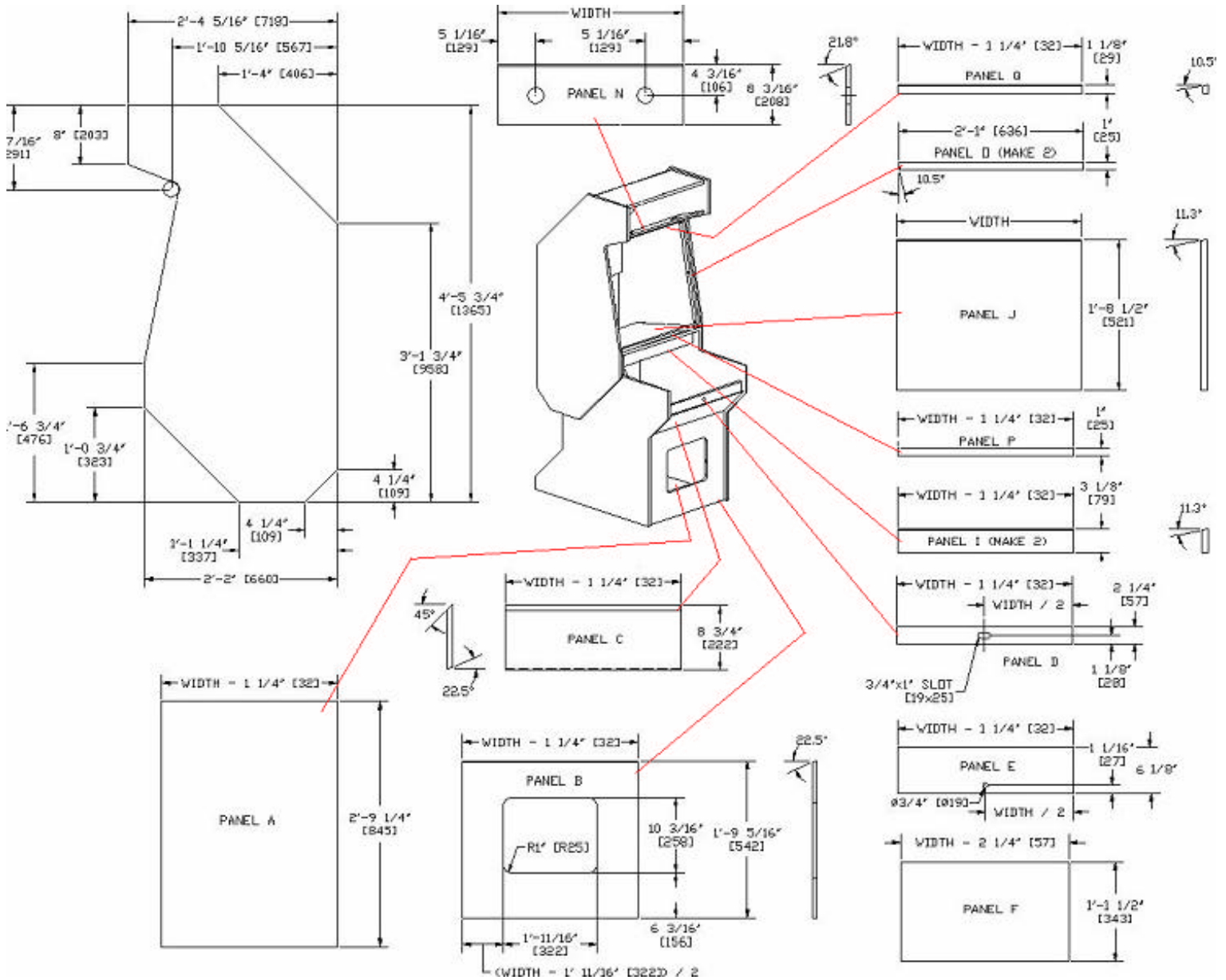
NOTE: Additional fasteners may be required for assembly if not included in hardware packages. The following list is a "base" list for the construction and assembly of the cabinet only. Additional materials will be required for hardware and equipment installation.

ITEM	QTY	PART NUMBER	DESCRIPTION
ITEM 1	(3)	-----	5/8" MDF or particle board (4'x8')
ITEM 2	(4)	-----	2.5" x 3" Steel brackets
ITEM 3	(16)	-----	1/2" Phillips head wood screws
ITEM 4	(28)	-----	3/4" Phillips head wood screws
ITEM 5	(12)	-----	1" Phillips head wood screws
ITEM 6	(62)	-----	1-3/8" Phillips head wood screws
ITEM 7	(1)	-----	Liquid nails or black caulk
ITEM 8	(1)	-----	Mailbox key lock 3/4"
ITEM 9	(3)	-----	Black formica countertop laminate (4'x8')
ITEM 10	(1)	-----	Laminate adhesive (1 quart)
ITEM 11	(1)	-----	18" Fluorescent lighting fixture w/light
ITEM 12	(2)	-----	Plexiglas sheet (Width of monitor opening x 7-7/16")
ITEM 13	(1)	-----	Plexiglas sheet (Width of monitor opening x 25")
ITEM 14	(1)	-----	12" Drawer slide rails
ITEM 15	(1)	49-1000-00	Marquee retainer (www.happcontrols.com)
ITEM 16	(43 FT)	49-0999-00	T Molding 3/4" smooth black (www.happcontrols.com)
ITEM 17	(1)	40-0325-00	4-Player coin door (www.happcontrols.com)
ITEM 18	(1)	49-0123-00	Bezel, Monitor F/25" black (www.happcontrols.com)
		49-0106-00	Bezel, Monitor F/27" black (www.happcontrols.com)

Cabinet Details

NOTES: All dimensions have a tolerance of +/- 1/16"

WIDTH = Maximum monitor area width (25" standard)



Full-Size Cutout Templates Available !

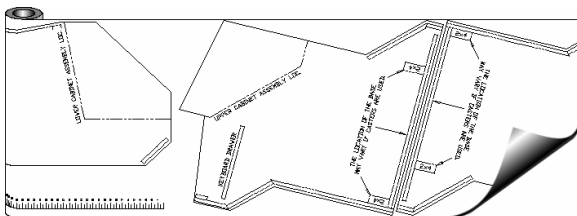
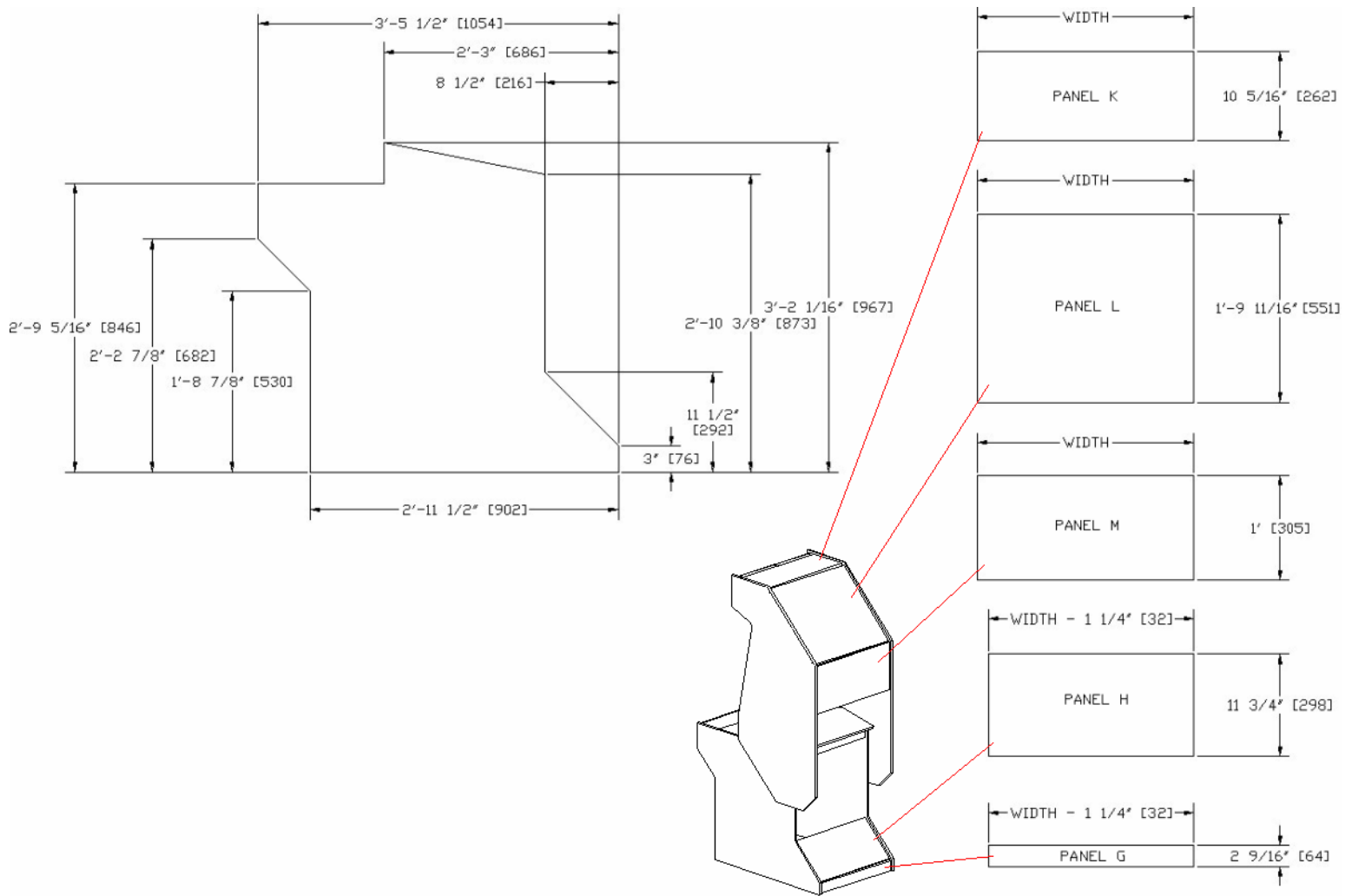
Simply lay on top of the wood material and cut.

- No measuring required!
- Eliminate costly mistakes
- Save time and money

Please visit the www.mameroom.com website for details.

Cabinet Details

NOTES: All dimensions have a tolerance of +/- 1/16"
 WIDTH = Maximum monitor area width (25" standard)

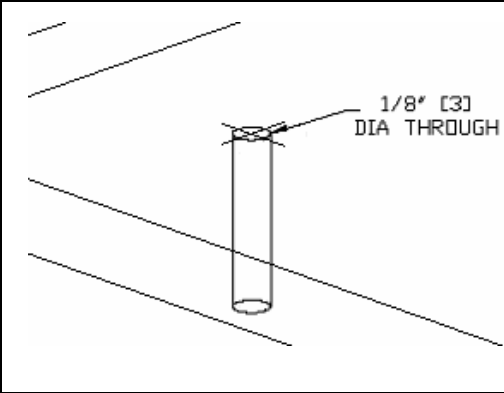


Full-Size Cutout Templates Available !

Simply lay on top of the wood material and cut.

- No measuring required!
- Eliminate costly mistakes
- Save time and money

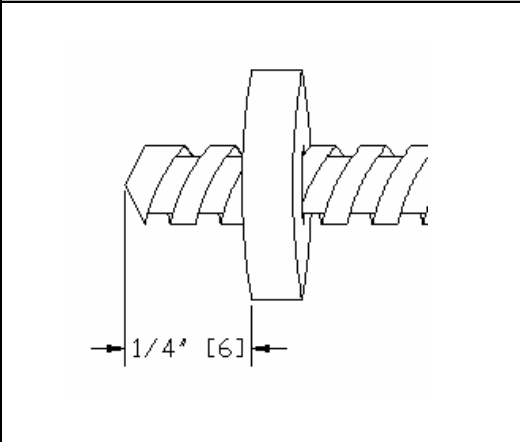
Please visit the www.mameroom.com website for details.



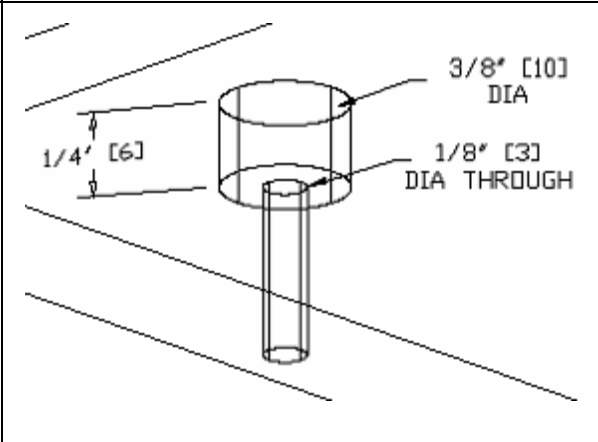
1) First locate the center of the hole and drill 1/8" hole through the material.

Countersinking Holes

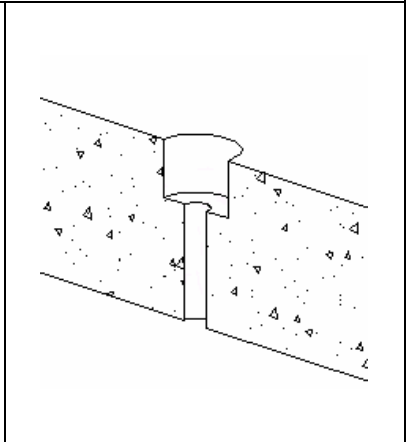
To create a countersunk hole, first locate the center of the hole. Using an 1/8" diameter drill bit, drill a hole through the wood panel as shown in the diagram to the left. Then use a 3/8" diameter drill bit and drill bit stop collar set to 1/4" deep to create the countersunk hole.



2) Attach a drill bit stop collar 1/4" in from the tip of the 3/8" drill bit.



3) Using the existing hole as a guide, countersink 1/4" deep with a 3/8" drill bit.



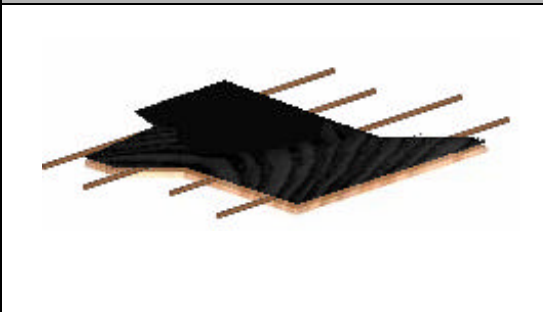
4) Above shows a cross section view of the countersunk hole.



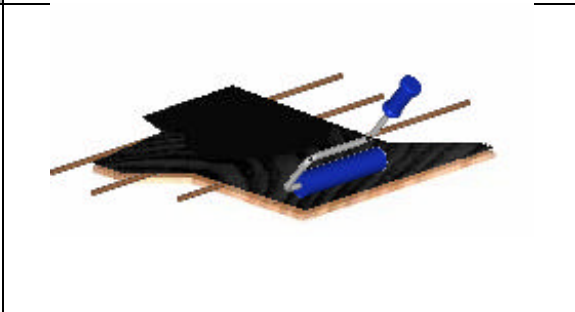
Cut the laminate 1/2" larger (all the way around) than the piece being laminated. Apply laminate adhesive to both the wood and the laminate where the two pieces will mate.

Installing Laminate

For countertop laminate, cut the laminate 1/2" larger all the way around the piece being laminated. Apply laminate cement on both pieces using a paint roller and allow to dry. Do not let sit for more than 1/2 hour. Place wood dowels or thin wood strips between the laminate and wood pieces. This will allow you to maneuver the laminate piece without touching the wood piece. Once the two cemented pieces touch each other, they will be permanently glued together. Once the laminate is in place (with 1/2" lip all the way around), start at one end/corner and press the laminate into place using a J-roller. As you work your way to the opposite end of the piece, pull out the wood dowels or strips one at a time while pressing and rolling the laminate. This will prevent air pockets. Trim off excess laminate using a router and laminate bit.



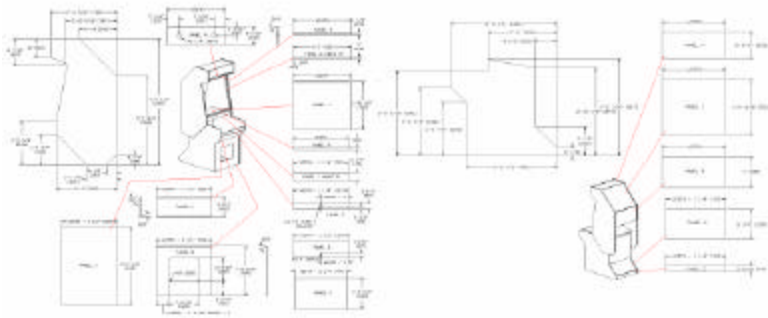
Place wood dowels or thin wood strips between the laminate and wood pieces.



Start at one end/corner and press the laminate into place using a rubber J-roller. As you work your way to the opposite end of the piece, pull out the wood dowels or strips.



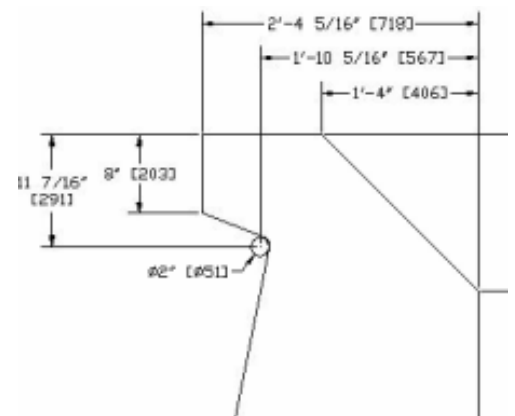
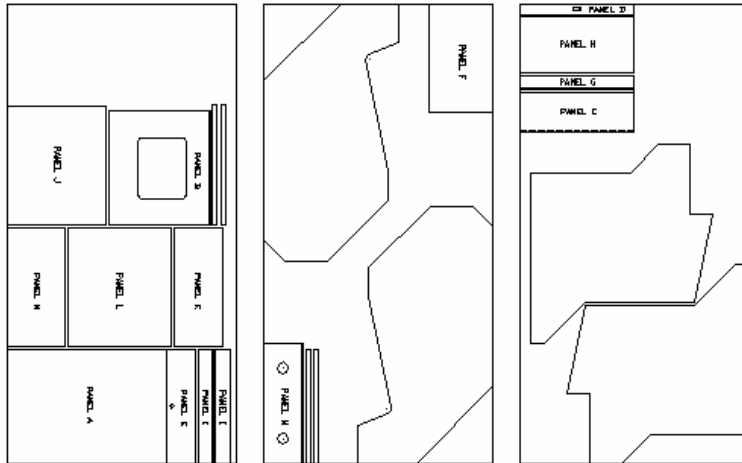
Trim off excess laminate using a router and laminate bit.



Step 1 Cutting cabinet panels

Use the material layout and cabinet detail drawings to layout and cut all of the cabinet pieces from the 5/8" x 4' x 8' wood sheets. Before cutting out the cabinet side panels, drill the two 2" diameter holes as specified in the cabinet details drawing. Layout and cut one cabinet piece at a time to allow for the saw blade width. Mark each piece for identification.

NOTE: Some pieces require a miter (angled) cut along one or more edges. Laminate all pieces (EXCEPT the 2 top side panels, 2 bottom side panels, and the keyboard drawer cover panel) BEFORE making the miter cuts. Paint the sides of the panels that will NOT be covered with laminate.



Shown above is sample panel layout for 25"-31" wide monitor opening.

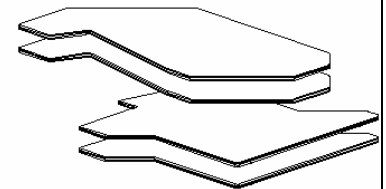
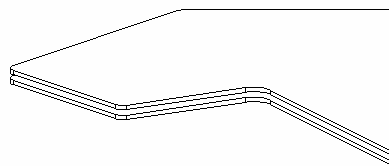
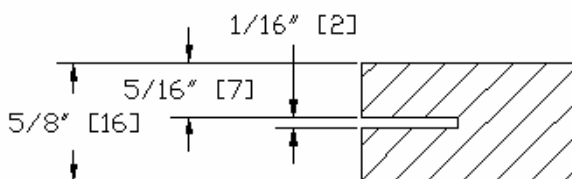
Drill the 2" diameter hole in the sheet of wood BEFORE cutting out the top side panels.



Step 2 Routing slot for T-molding

Using the 1/16" slot cutting router bit, cut a groove all the way around the top and bottom side panels. Be sure to center the router bit in the middle of the material.

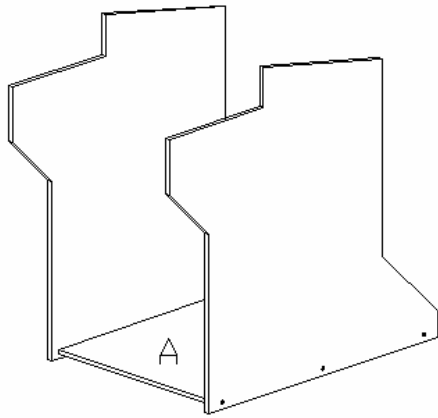
NOTE: USE A SCRAP PIECE OF WOOD TO TEST.



Cut the 1/16" slot in the exact center of the side panels.

Cut the 1/16" slot all the way around the side panel.

Repeat this step for each of the top and bottom side panels.

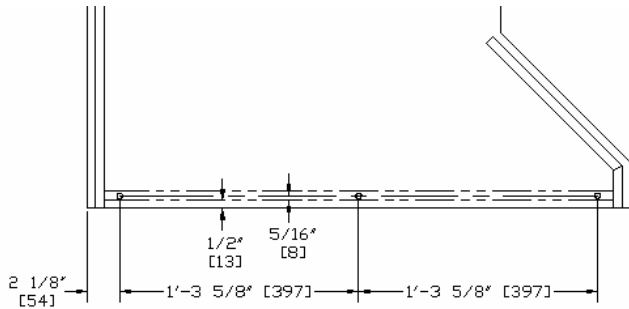


Step 3 Cabinet bottom panel assembly

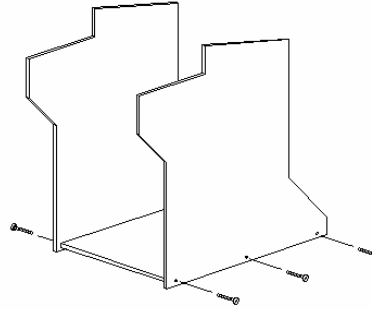
Install panel-A by measuring and drawing construction lines on both the inside and outside of both side panels. Measure $\frac{1}{2}$ " in from the outside edge and draw a construction line parallel to the edge. Measure $\frac{5}{8}$ " (material width) in from the construction line and draw another parallel line. This will be the location of panel-A. Using the measurements below, locate the center line of panel-A and drill 3 countersunk holes in each side panel. If you are using the full-sized templates, panel-A and the countersunk holes are already located. Repeat this step on the opposite side panel. Apply a bead of adhesive on the front edge of panel-A. Use 1-3/8" long wood screws to attach panel-A to the side panels as shown below.

Repeat this step for the opposite side panel. Be sure to countersink the holes on the **opposite** side for the second side panel.

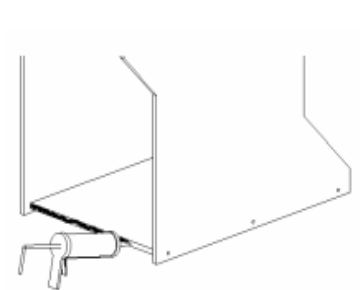
NOTE: All screw holes are to be countersunk (refer to "Countersinking Holes").



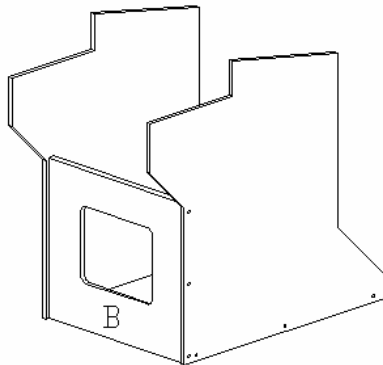
Locate (3) screw holes using the dimensions and construction lines illustrated above.



Position and drill 1/16" pilot holes into panel-A. Use 1-3/8" long wood screws to secure panel-A to the side panels.



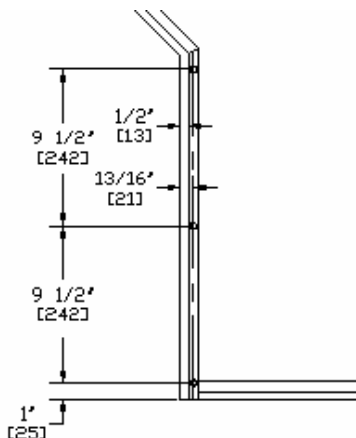
Place a bead of Liquid Nails or similar adhesive along the front edge of panel-A.



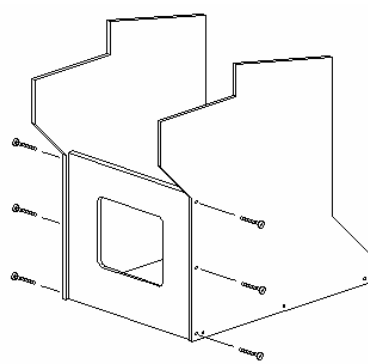
Step 4 Coin door panel assembly

Install panel-B by measuring and drawing construction lines on both the inside and outside of both side panels. Measure $\frac{1}{2}$ " in from the outside edge and draw a construction line parallel to the edge. Measure $\frac{5}{8}$ " (material width) in from the construction line and draw another parallel line. This will be the location of panel-B. Using the measurements below, locate the center line of panel-B and drill 3 countersunk holes in each side panel. If you are using the full-sized templates, panel-B and the countersunk holes are already located. Repeat this step on the opposite side panel. Apply a bead of adhesive on the top edge of panel-B. Use 1-3/8" long wood screws to attach panel-B to the side panels as shown below.

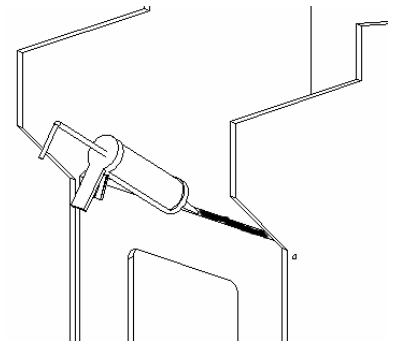
NOTE: All screw holes are to be countersunk (refer to "Countersinking Holes").



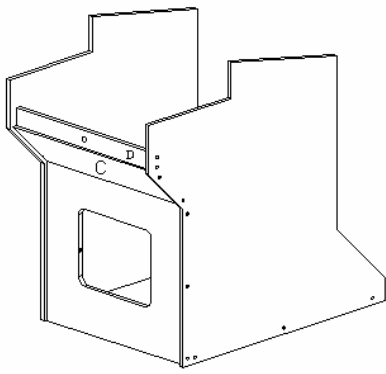
Locate (3) screw holes using the dimensions and construction lines illustrated above.



Position and drill 1/16" pilot holes into panel-B. Use 1-3/8" long wood screws to secure panel-B to the side panels.



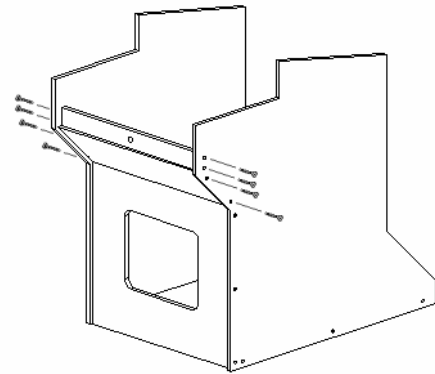
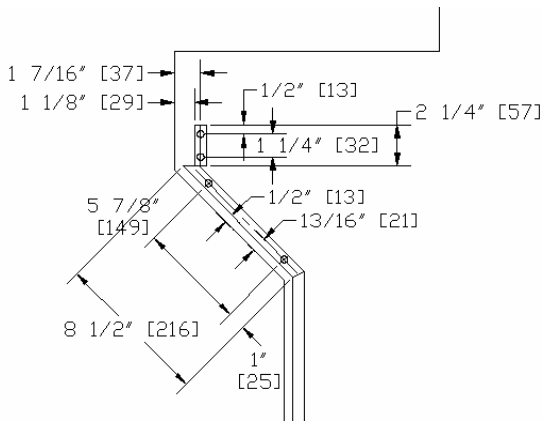
Place a bead of Liquid Nails or similar adhesive along the top edge of panel-B.



Step 5 Angled front panel and keyboard drawer back plate assembly

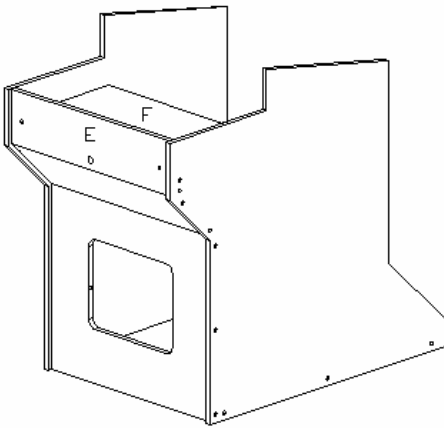
Install panel-C and panel-D by measuring and drawing construction lines on both the inside and outside of both side panels. Measure $\frac{1}{2}$ " in from the outside edge and draw a construction line parallel to the edge. Measure $\frac{5}{8}$ " (material width) in from the construction line and draw another parallel line. This will be the location of panel-C. Using the measurements below, locate the center line of panel-C and drill 2 countersunk holes in each side panel. Use the measurements below to locate the center line of panel-D and drill 2 countersunk holes in each side panel. If you are using the full-sized templates, panel-C, panel-D and the countersunk holes are already located. Repeat this step on the opposite side panel. Use 1-3/8" long wood screws to attach panel-C and panel-D to the side panels as shown below.

NOTE: All screw holes are to be countersunk (refer to "Countersinking Holes").



Locate (4) screw holes using the dimensions and construction lines illustrated above.

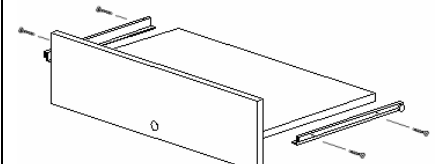
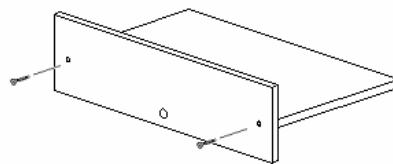
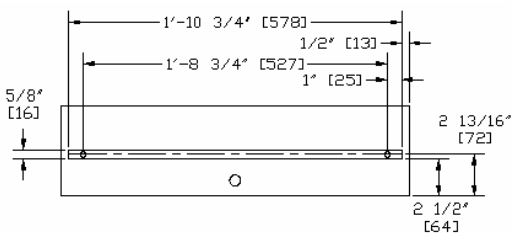
Position and drill $\frac{1}{16}$ " pilot holes into panel-C and panel-D. Use 1-3/8" long wood screws to secure panel-C and panel-D to the side panels.



Step 6 Keyboard drawer assembly

Assemble panel-E and panel-F by measuring and drawing construction lines on both the inside and outside of panel-E. Use the measurements below to locate the center line of panel-F and drill 2 countersunk holes in panel-E. If you are using the full-sized templates, panel-E, panel-F and the countersunk holes are already located. Use 1-3/8" long wood screws to attach panel-E and panel-F. Attach the laminate to the outside of panel-E (refer to "Installing Laminate"). Secure the drawer glide rails to the keyboard drawer as shown below. The rails should be flush with the rear edge of the keyboard drawer. Install key lock on panel E using the instructions provided with the locking mechanism.

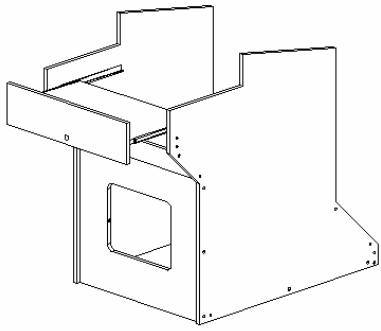
NOTE: All screw holes are to be countersunk (refer to "Countersinking Holes").



Locate (2) screw holes using the dimensions and construction lines illustrated above.

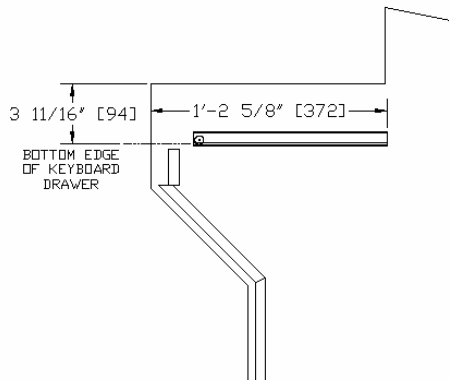
Position and drill $\frac{1}{16}$ " pilot holes into panel-F. Use 1-3/8" long wood screws to secure panel-E to panel-F.

Secure the drawer glide rails to the keyboard drawer using $\frac{1}{2}$ " long wood screws.

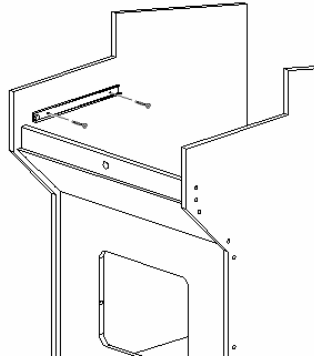


Step 7 Keyboard drawer slide installation

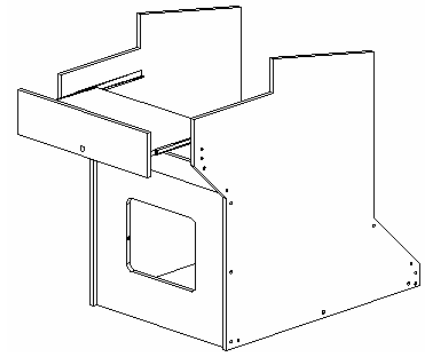
Locate the keyboard drawer slides on the inside of the side panels using the measurements below. Due to the variations in designs, the exact position of the drawer slide rail will need to be determined during assembly. Secure the slide rails using ½" long wood screws as shown. Install the keyboard drawer assembly.



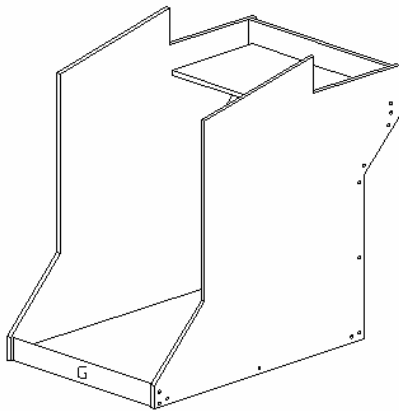
Locate (2) screw holes using the dimensions and construction lines illustrated above.



Attach outside slide rails using ½" long wood screws as shown.



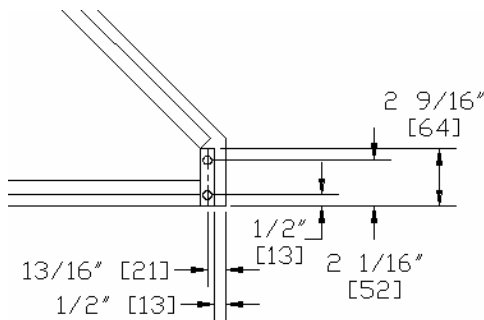
Install keyboard drawer assembly.



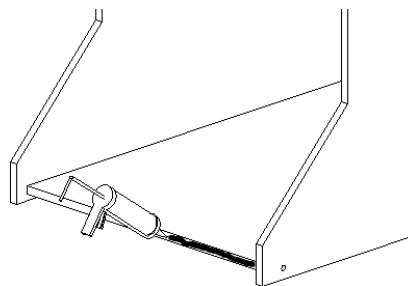
Step 8 Rear panel assembly

Install panel-G by measuring and drawing construction lines on both the inside and outside of both side panels. Measure ½" in from the outside edge and draw a construction line parallel to the edge. Measure 5/8" (material width) in from the construction line and draw another parallel line. This will be the location of panel-G. Using the measurements below, locate the center line of panel-G and drill 2 countersunk holes in each side panel. If you are using the full-sized templates, panel-G and the countersunk holes are already located. Repeat this step on the opposite side panel. Apply a bead of adhesive on the top edge of panel-A. Use 1-3/8" long wood screws to attach panel-G to the side panels as shown below.

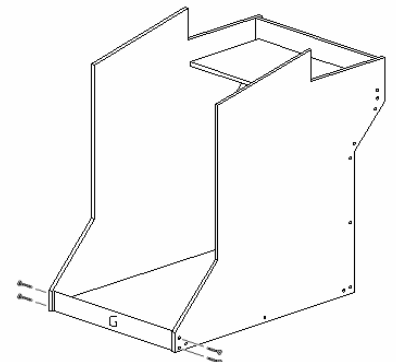
NOTE: All screw holes are to be countersunk (refer to "Countersinking Holes").



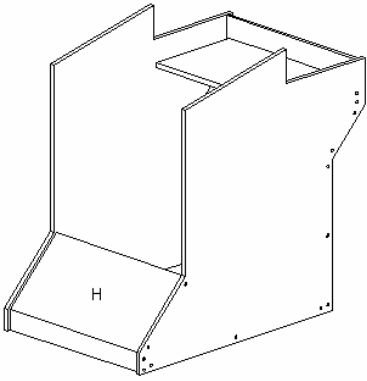
Locate (2) screw holes using the dimensions and construction lines illustrated above.



Place a bead of Liquid Nails or similar adhesive along the rear edge of panel-A.



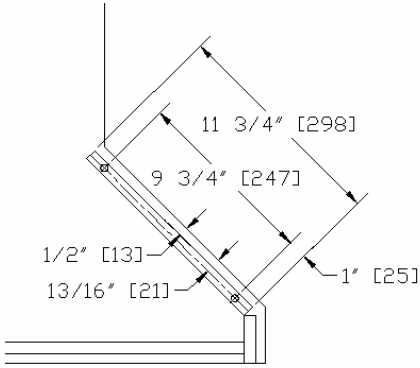
Position and drill 1/16" pilot holes into panel-G. Use 1-3/8" long wood screws to secure panel-G to the side panels.

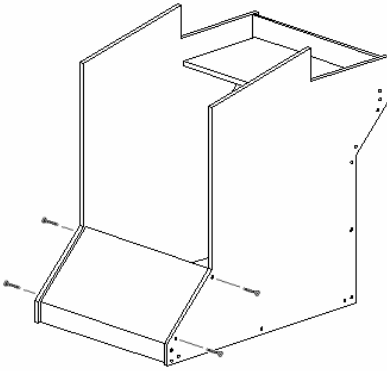


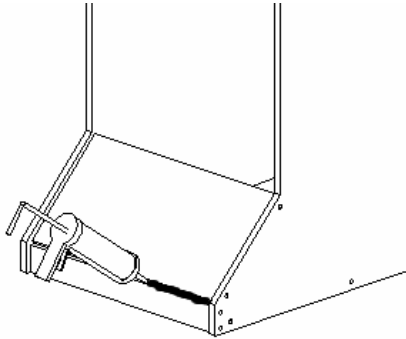
Step 9 Rear panel assembly

Install panel-H by measuring and drawing construction lines on both the inside and outside of both side panels. Measure $\frac{1}{2}$ " in from the outside edge and draw a construction line parallel to the edge. Measure $\frac{5}{8}$ " (material width) in from the construction line and draw another parallel line. This will be the location of panel-H. Using the measurements below, locate the center line of panel-H and drill 2 countersunk holes in each side panel. If you are using the full-sized templates, panel-H and the countersunk holes are already located. Repeat this step on the opposite side panel. Apply a bead of adhesive on the top edge of panel-G. Use 1-3/8" long wood screws to attach panel-H to the side panels as shown below.

NOTE: All screw holes are to be countersunk (refer to "Countersinking Holes").



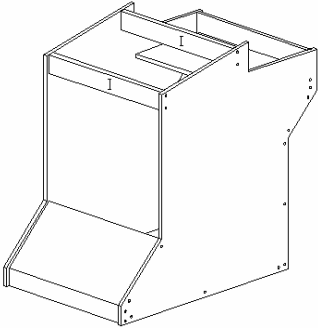




Locate (2) screw holes using the dimensions and construction lines illustrated above.

Position and drill 1/16" pilot holes into panel-H. Use 1-3/8" long wood screws to secure panel-H to the side panels.

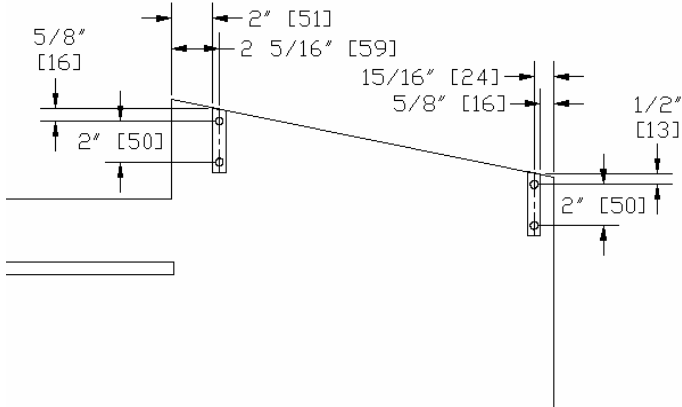
Place a bead of Liquid Nails or similar adhesive between panel-H and panel-G.

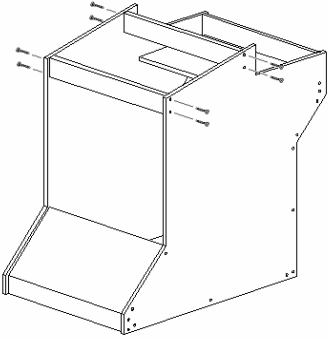


Step 10 Monitor shelf assembly

Install panel-I by measuring and drawing construction lines on both the inside and outside of both side panels. Using the measurements below, locate the center line of panel-I and drill 2 countersunk holes in each side panel. If you are using the full-sized templates, panel-I and the countersunk holes are already located. Repeat this step on the opposite side panel. Use 1-3/8" long wood screws to attach panel-I to the side panels as shown below.

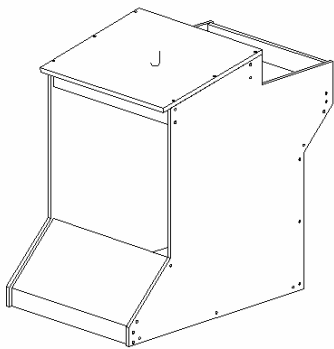
NOTE: All screw holes are to be countersunk (refer to "Countersinking Holes").





Locate (4) screw holes using the dimensions and construction lines illustrated above.

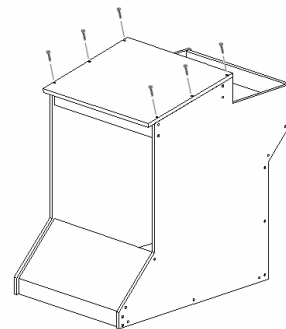
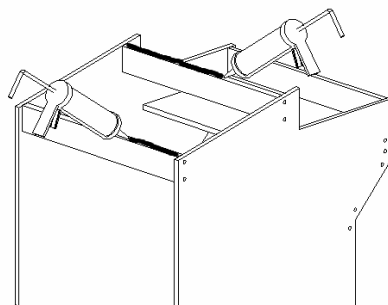
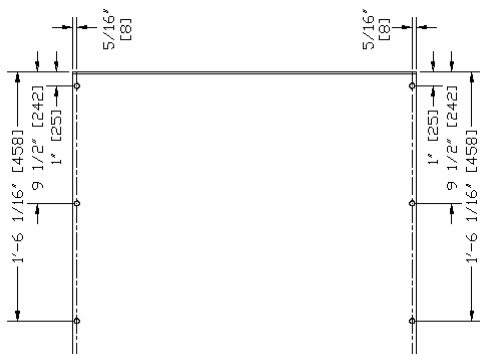
Position and drill 1/16" pilot holes into panel-I. Use 1-3/8" long wood screws to secure panel-I to the side panels.



Step 11 Monitor shelf assembly

Install panel-J by measuring and drawing construction lines on the top of the monitor shelf panel. Using the measurements below, locate the center line of panel-I and drill 6 countersunk holes in panel-J as shown below. If you are using the full-sized templates, panel-I, panel-J and the countersunk holes are already located. Apply a bead of adhesive on the top edge of panel-I. Use 1-3/8" long wood screws to attach panel- to the side panels as shown below.

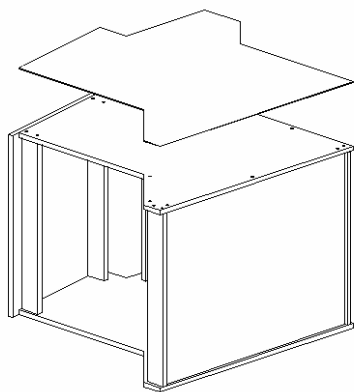
NOTE: All screw holes are to be countersunk (refer to "Countersinking Holes").



Locate (6) screw holes using the dimensions and construction lines illustrated above.

Place a bead of Liquid Nails or similar adhesive along the top edge of panel-I.

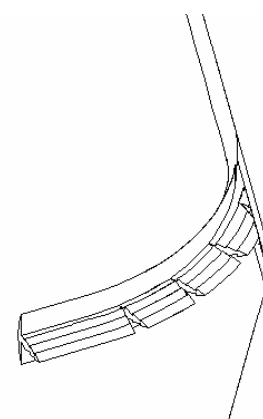
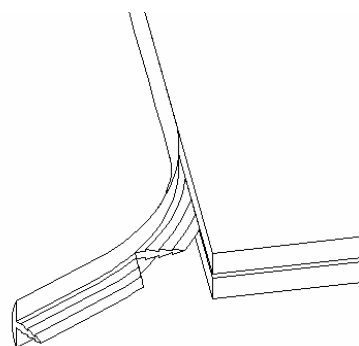
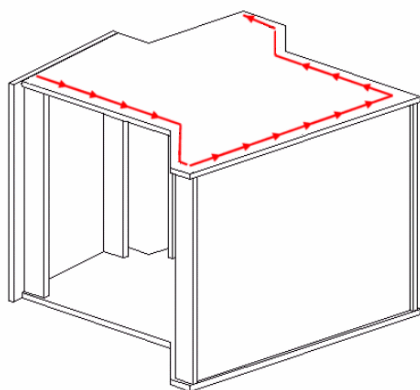
Position and drill 1/16" pilot holes into the side panels. Use 1-3/8" long wood screws to secure panel-J to the side panels.



Step 12 Finishing the assembled base

Turn the assembled cabinet base on one side. Attach the laminate to the side of the cabinet (see "Installing Laminate"). Install the T-molding starting under the rear of the monitor shelf as shown below. Use a razor blade to cut v-shaped notches in the T-molding around outside and inside corners. Turn the cabinet assembly on the opposite side and repeat this step for the opposite side.

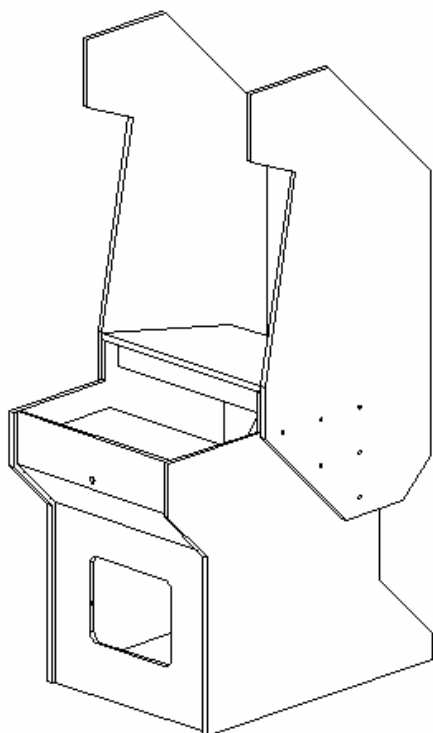
NOTE: Injury may occur if attempting to complete this step without assistance. This is a reminder to never assemble your Ultimate Arcade cabinet without assistance. Remove the keyboard drawer assembly FIRST.



Install the T-molding starting under the rear of the monitor shelf. The T-molding will end under the control panel.

Use a razor blade to cut a v-shaped notch in the T-molding at the outside corners.

Use a razor blade to cut slits in the T-molding at the inside corners.

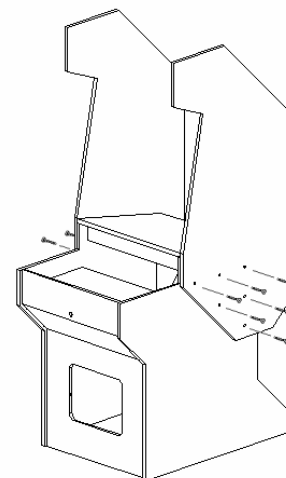
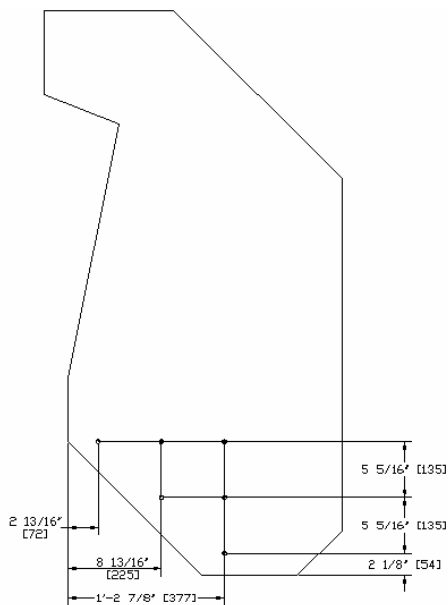
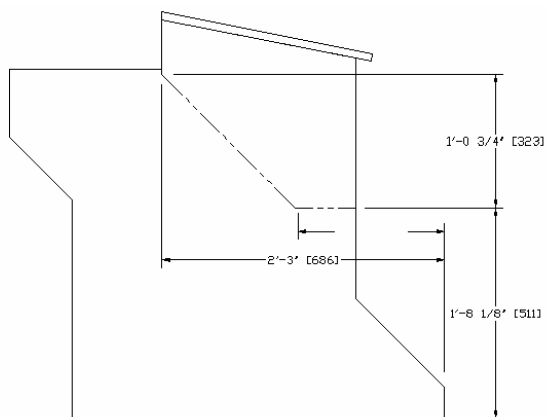


Step 13 Top side panel assembly

Install the top side panels by measuring and drawing construction lines on the outside of both bottom side panels. Using the measurements below, drill 6 countersunk holes in each side panel. If you are using the full-sized templates, the top side panels and the countersunk holes are already located. Repeat this step on the opposite side panel. Use 1" long wood screws to attach the top side panels to the assembled base.

NOTE: Injury may occur if attempting to complete this step without assistance. This is a reminder to never assemble your Ultimate Arcade cabinet without assistance.

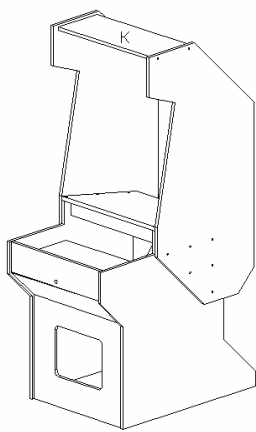
NOTE: All screw holes are to be countersunk (refer to "Countersinking Holes").



Using the measurements above, draw construction lines where the top side panel will be attached.

Locate (6) screw holes using the dimensions and construction lines illustrated above.

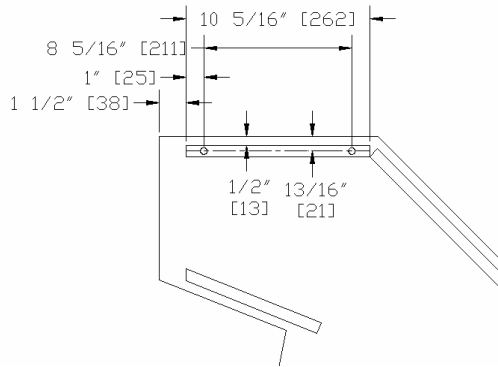
Use 1" long wood screws to secure the top side panels to the base assembly.



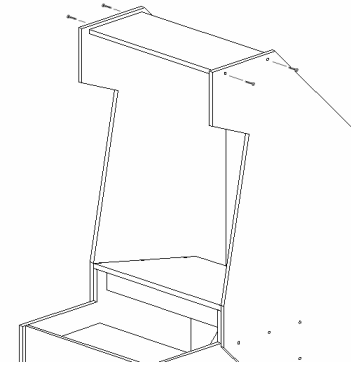
Step 14 Top panel assembly

Install panel-K by measuring and drawing construction lines on both the inside and outside of both side panels. Measure $\frac{1}{2}$ " in from the outside edge and draw a construction line parallel to the edge. Measure $\frac{5}{8}$ " (material width) in from the construction line and draw another parallel line. This will be the location of panel-H. Using the measurements below, locate the center line of panel-K and drill 2 countersunk holes in each side panel. If you are using the full-sized templates, panel-K and the countersunk holes are already located. Repeat this step on the opposite side panel. Use 1-3/8" long wood screws to attach panel-K to the side panels as shown below.

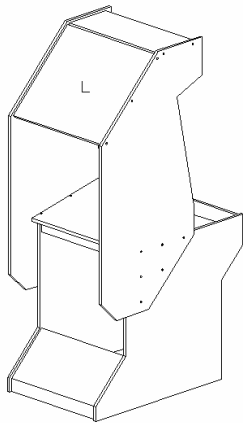
NOTE: All screw holes are to be countersunk (refer to "Countersinking Holes").



Locate (2) screw holes using the dimensions and construction lines illustrated above.



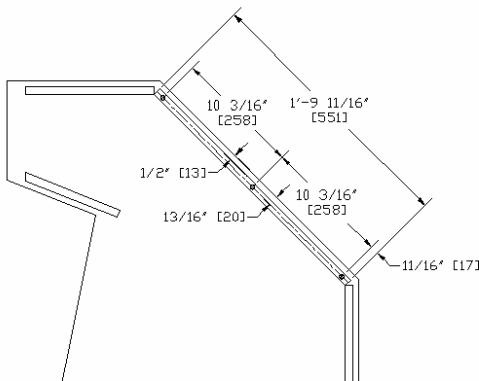
Use 1-3/8" long wood screws to secure the top side panels to the base assembly.



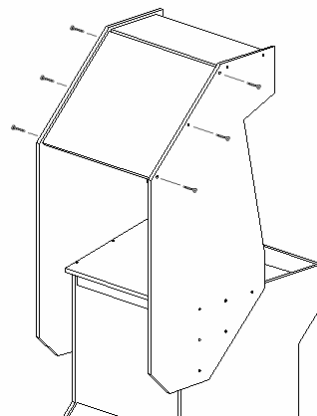
Step 15 Top angled panel assembly

Install panel-L by measuring and drawing construction lines on both the inside and outside of both side panels. Measure $\frac{1}{2}$ " in from the outside edge and draw a construction line parallel to the edge. Measure $\frac{5}{8}$ " (material width) in from the construction line and draw another parallel line. This will be the location of panel-L. Using the measurements below, locate the center line of panel-L and drill 3 countersunk holes in each side panel. If you are using the full-sized templates, panel-L and the countersunk holes are already located. Repeat this step on the opposite side panel. Use 1-3/8" long wood screws to attach panel-L to the side panels as shown below. Apply a bead of adhesive between panel-K and panel-L as shown below.

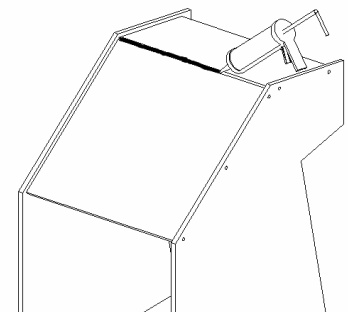
NOTE: All screw holes are to be countersunk (refer to "Countersinking Holes").



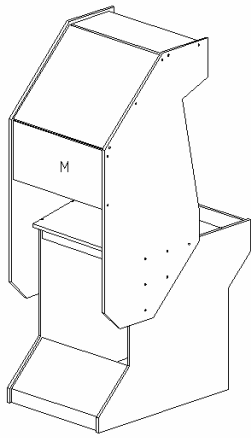
Locate (3) screw holes using the dimensions and construction lines illustrated above.



Use 1-3/8" long wood screws to secure panel-L to the side panels.



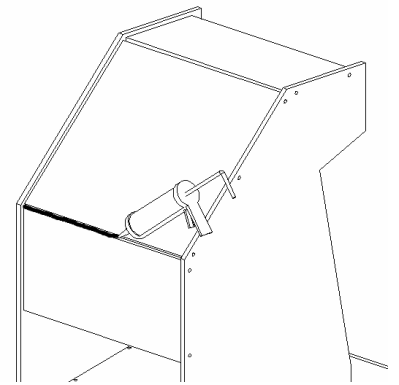
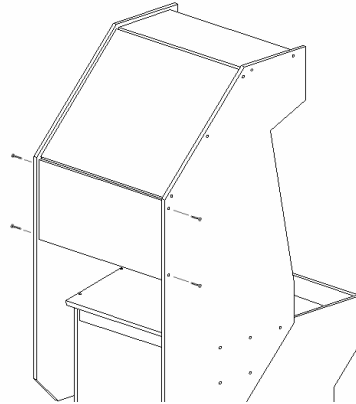
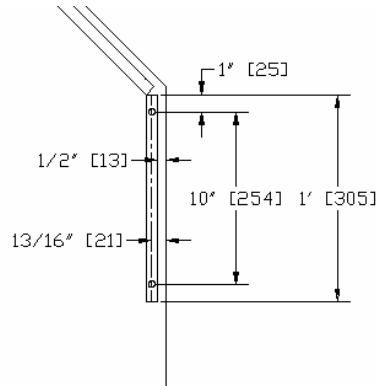
Apply a bead of adhesive between panel-K and panel-L as shown.



Step 16 Top rear panel assembly

Install panel-M measuring and drawing construction lines on both the inside and outside of both side panels. Measure $\frac{1}{2}$ " in from the outside edge and draw a construction line parallel to the edge. Measure $\frac{5}{8}$ " (material width) in from the construction line and draw another parallel line. This will be the location of panel-M. Using the measurements below, locate the center line of panel-M and drill 2 countersunk holes in each side panel. If you are using the full-sized templates, panel-M and the countersunk holes are already located. Repeat this step on the opposite side panel. Use 1- $\frac{3}{8}$ " long wood screws to attach panel-M to the side panels as shown below. Apply a bead of adhesive between panel-L and panel-M as shown below.

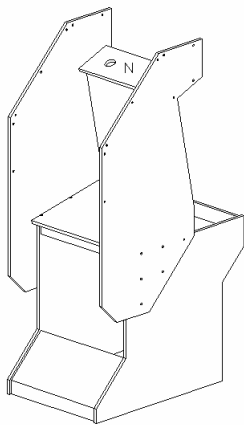
NOTE: All screw holes are to be countersunk (refer to "Countersinking Holes").



Locate (2) screw holes using the dimensions and construction lines illustrated above.

Use 1- $\frac{3}{8}$ " long wood screws to secure panel-M to the side panels.

Apply a bead of adhesive between panel-L and panel-M as shown.

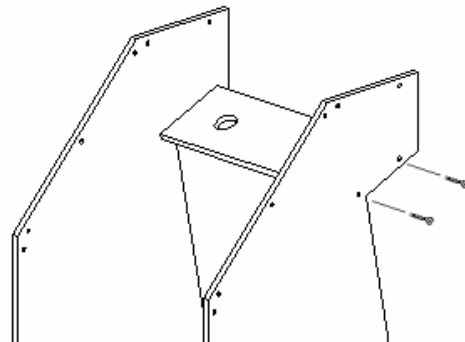
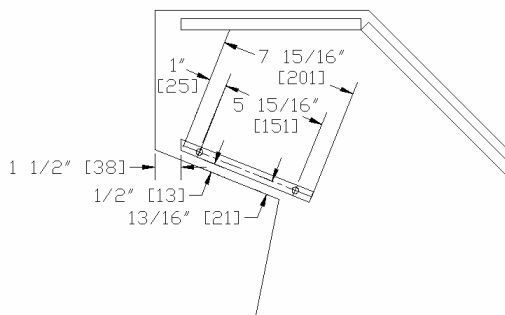


Step 17 Speaker panel assembly

Install panel-N measuring and drawing construction lines on both the inside and outside of both side panels. Measure $\frac{1}{2}$ " in from the outside edge and draw a construction line parallel to the edge. Measure $\frac{5}{8}$ " (material width) in from the construction line and draw another parallel line. This will be the location of panel-N. Using the measurements below, locate the center line of panel-N and drill 2 countersunk holes in each side panel. If you are using the full-sized templates, panel-N and the countersunk holes are already located. Repeat this step on the opposite side panel. Use 1- $\frac{3}{8}$ " long wood screws to attach panel-N to the side panels as shown below.

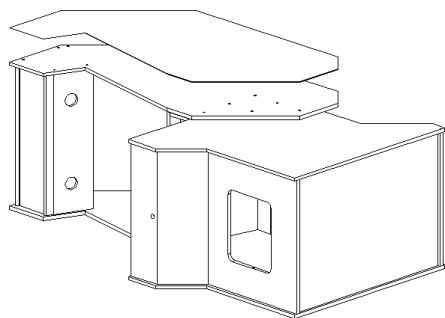
NOTE: All screw holes are to be countersunk (refer to "Countersinking Holes").

Rear Panels not shown for clarity



Locate (2) screw holes using the dimensions and construction lines illustrated above.

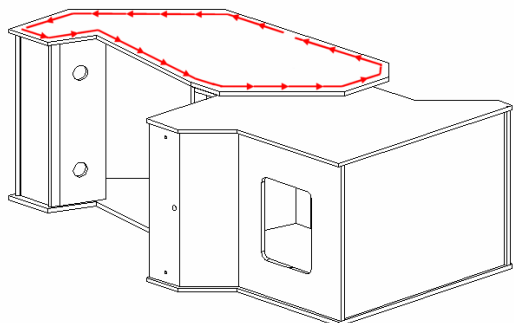
Use 1- $\frac{3}{8}$ " long wood screws to secure panel-N to the side panels.



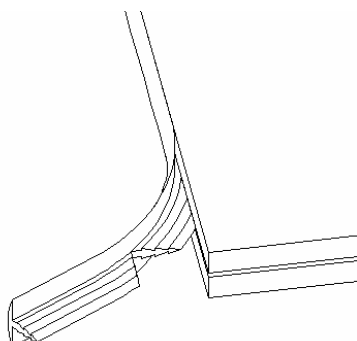
Step 18 Finishing the assembled cabinet

Turn the assembled cabinet base on one side. Attach the laminate to the side of the cabinet (see "Installing Laminate"). Install the T-molding starting in the middle of the rear edge of the top side panel. Use a razor blade to cut v-shaped notches in the T-molding around outside and inside corners. Turn the cabinet assembly on the opposite side and repeat this step for the opposite side.

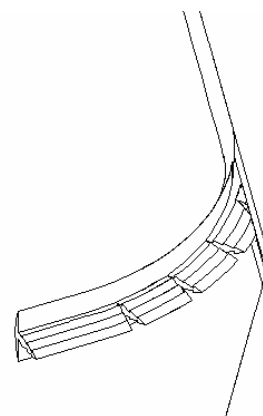
NOTE: Injury may occur if attempting to complete this step without assistance. This is a reminder to never assemble your Ultimate Arcade cabinet without assistance.



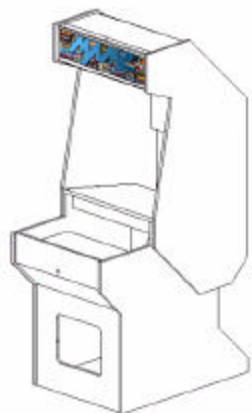
Install the T-molding all the way around the top side panel. Start in the middle of the rear edge of the top side panel.



Use a razor blade to cut a v-shaped notch in the T-molding at the outside corners.

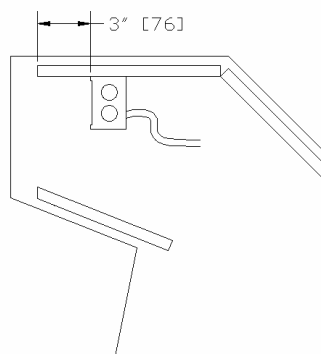


Use a razor blade to cut slits in the T-molding at the inside corners.



Step 19 Marquee assembly

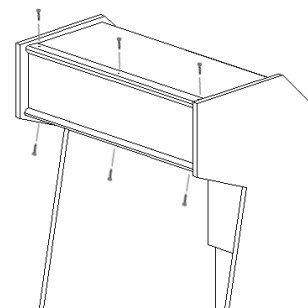
Secure the fluorescent lighting fixture to the inside top of the arcade cabinet using ½" long wood screws. Position the lighting fixture approximately 3" in from the marquee (See diagram below). Place the marquee in between the two pieces of plexiglas. Position the plexiglas flush with the top panel and speaker panel. Secure the marquee assembly using the marquee retainers and ½" long wood screws as shown below.



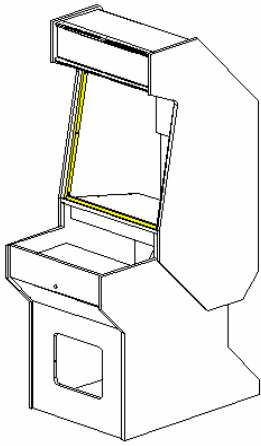
Secure the fluorescent lighting fixture to the inside top of the arcade cabinet using ½" long wood screws.



Place the marquee in between the two pieces of plexiglas.



Secure the marquee assembly using the marquee retainers and ½" long wood screws

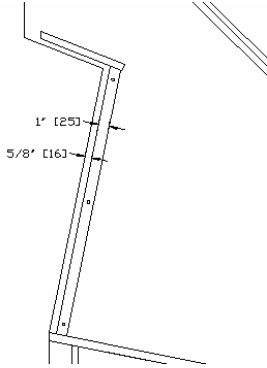


Step 20 Bezel frame assembly

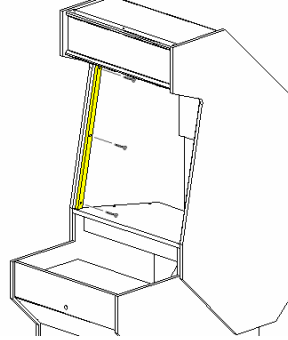
Install panel-O measuring and drawing construction lines on the inside of both side panels. Measure 5/8" in from the outside edge and draw a construction line parallel to the edge. Measure 1" in from the construction line and draw another parallel line. This will be the location of panel-O. Secure panel-O to the side panel using 3/4" long wood screws. Repeat this step on the opposite side panel.

Install panel-P between panels-O and secure panel-P using 3/4" long wood screws as shown below. Secure panel-Q (Top bezel frame – Not shown) to panel-N (Speaker panel) between panels-O using 3/4" long wood screws.

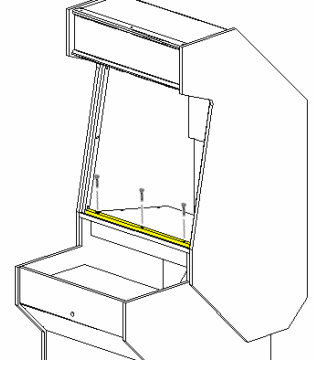
If you are using the full-sized templates, panel-O and panel-P are already located.



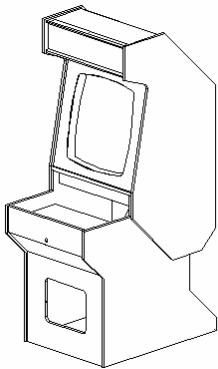
Locate panel-O using the dimensions and construction lines illustrated above.



Secure panel-O to the side panel using (3) 3/4" long wood screws.



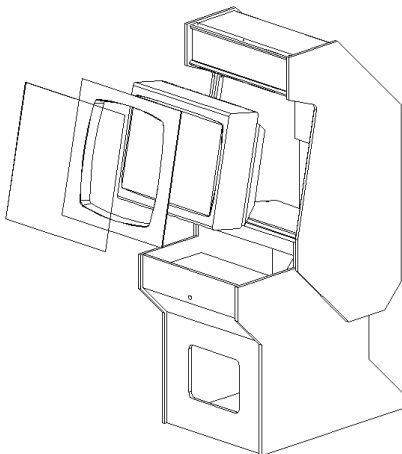
Secure panel-P to the monitor shelf panel using (3) 3/4" long wood screws.



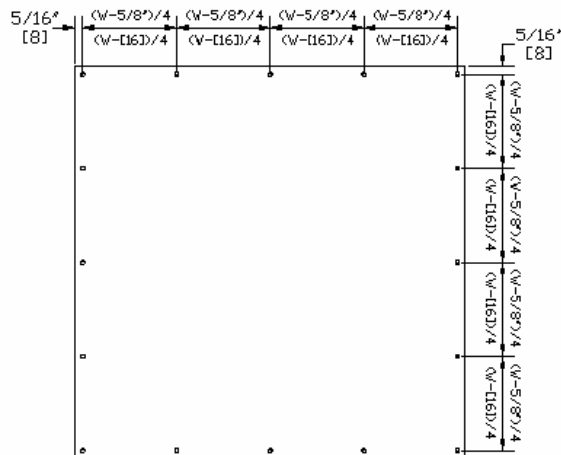
Step 21 Monitor and bezel assembly

The bezel frame panels may have to be temporarily removed if the monitor is too wide. Center the monitor within the cabinet and position it as close as possible to the front of the cabinet. The monitor should be secured in some fashion (Due to the various shapes and base dimensions, this could not be included in this document.) Position the plastic bezel frame (may have to be trimmed to fit within cabinet). Place the plexiglas bezel over the plastic bezel frame. Using the measurements below (W = Monitor area width), drill 1/8" diameter pilot holes through the plexiglas and bezel frame. Secure using 1/2" long wood screws.

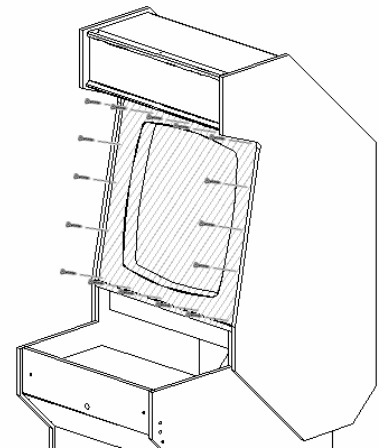
NOTE: Plastic bezel frames may not be offered for larger monitors.



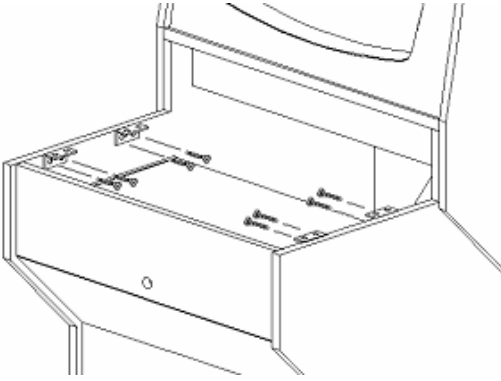
Install the monitor, bezel frame and plexiglas bezel as shown above.



Use the measurements shown to drill 1/8" pilot holes in the plexiglas bezel and bezel frame.

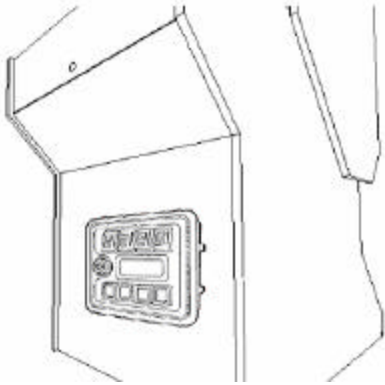


Use 1/2" long wood screws to secure the bezel and bezel frame.



Step 22 Install control panel brackets

Locate (4) I-brackets flush with the top edge of the side panel. Secure I-brackets using ½" long wood screws.



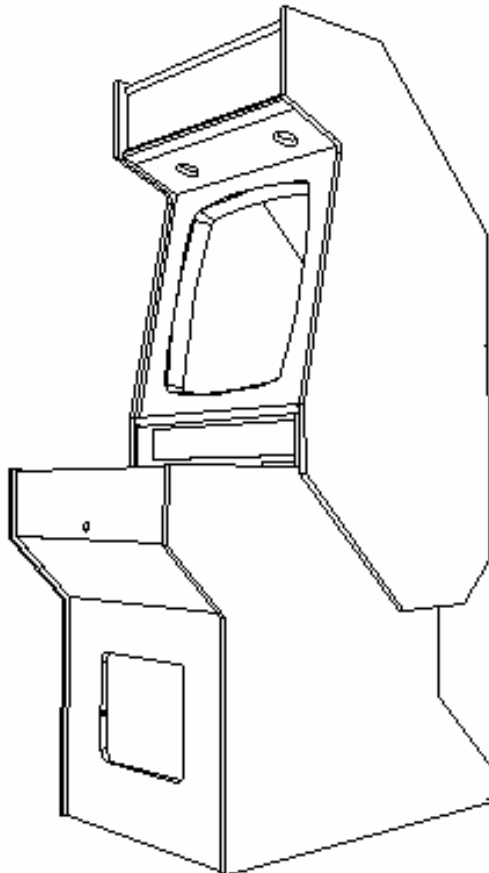
Step 23 Coin door installation

Install the coin door assembly using the installation instructions that ship with the coin door.

For Technical Support or questions:

Please send inquiries to:
info@cybertechdesign.net

CyberTech Design
www.cybertechdesign.net

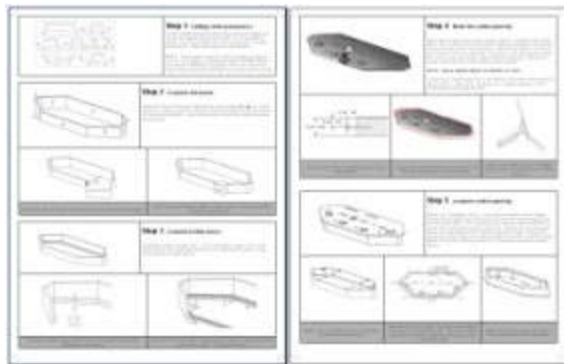


Ultimate Arcade [®] Control Panel



Bring all the entertainment of an entire video arcade home. Play thousands of your favorite arcade and console games with one arcade game control panel. The Ultimate Arcade Control Panel features 4-player controls, trackball, and spinner.

ULTIMATE ARCADE CONTROL PANEL PLANS ORDER INFORMATION

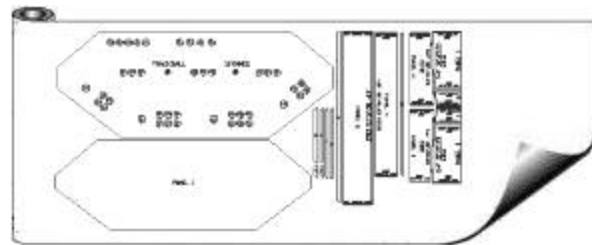


Illustrated Step-By-Step Plans

The step-by-step construction plans contain several illustrations and instructions for each step. These detailed plans make building your very own arcade cabinet quick and simple, even for the novice wood worker!

Plans include:

- Material and equipment list for control panel
- Detailed cutout dimensions for all panels
- General wiring instructions & schematic



Full-size cutout templates

Save time and money by using full-size cutouts for the cabinet panels. No measuring required and no costly mistakes. Just glue, tape, or trace the templates onto the wood material and cut.

Ultimate Arcade Control Panel Product Specifications

The Ultimate Arcade Control Panel is available in four different sizes to accomodate different cabinet sizes. The size of the cabinet is determined by the monitor area width.

{WIDTH} = Monitor area width (25", 27", 29", or 31")

Control Panel Width:	{WIDTH} + 1'-9 7/16" [545 mm]
Control Panel Height:	5 1/2" [140 mm]
Control Panel Depth:	1'-5 11/16" [449 mm]

ULTIMATE ARCADE CONTROL PANEL ORDERING INFORMATION

For more information, please visit:

www.MameRoom.com



Shown with an Ultimate Arcade control panel

Ultimate Arcade II®

The Ultimate Gaming Experience

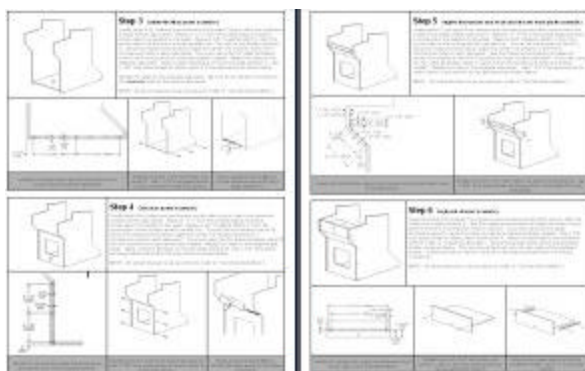
Bring all the entertainment of an entire video arcade home!

Play thousands of your favorite arcade and console games in one arcade game cabinet. Ultimate Arcade II features a unique, two-piece construction, slide-out keyboard drawer, and a backlit marquee. The Ultimate Arcade II is designed to use a standard computer monitor or television...also fits [SlikStik](#) and [X-Arcade](#) (With base) brand control panels.



Shown with a [SlikStik](#) control panel

ULTIMATE ARCADE II PRODUCT INFORMATION



Illustrated Step-By-Step Plans

The step-by-step construction plans contain several illustrations and instructions for each step. These detailed plans make building your very own arcade cabinet quick and simple, even for the novice wood worker!

Plans include:

- Material and equipment list for cabinet
- Detailed cutout dimensions for all panels
- Panel layout for optimized material cutting



Full-size cutout templates

Save time and money by using full-size cutouts for the cabinet panels. No measuring required and no costly mistakes. Just glue, tape, or trace the templates onto the wood material and cut.

Ultimate Arcade II Product Specifications

The Ultimate Arcade II cabinet is available in four different sizes to accommodate different monitor sizes.
{WIDTH} = Monitor area width (25", 27", 29", or 31")

Cabinet Width (No Control Panel):	{WIDTH} + 1 1/2" [38 mm]
Cabinet Depth (No Control Panel):	41 1/2" [1054 mm]
Overall Cabinet Height:	75 7/16" [1916 mm]
Monitor Area Width:	{WIDTH}
Monitor Area Height:	24 13/16" [630 mm]
Monitor Area Depth:	20 7/16" [519 mm]
X-Arcade Compatible (Requires additional base):	Fits 25",27",29" & 31" cabinet widths
SlikStik Classic Compatible:	Fits 25" and 27" cabinets widths ONLY
SlikStik Fighter Compatible:	Fits 25" and 27" cabinets widths ONLY
SlikStik Co2 Compatible:	Fits 25",27",29" & 31" cabinet widths
SlikStik Quad Compatible:	Fits 25",27",29" & 31" cabinet widths

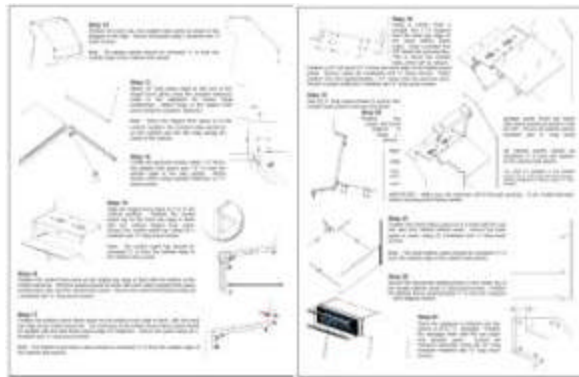


Ultimate Arcade I [®]

Bring all the entertainment of an entire video arcade home. Play thousands of your favorite arcade and console games in one arcade game cabinet. Ultimate Arcade I features a classic arcade design, custom 2-player control panel, slide-out keyboard drawer, and a backlit marquee. The Ultimate Arcade I is designed to use a standard computer monitor or television.



ULTIMATE ARCADE I PRODUCT INFORMATION

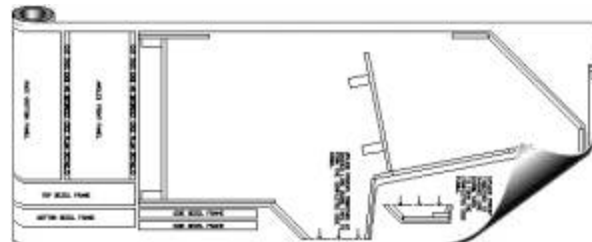


Illustrated Step-By-Step Plans

The step-by-step construction plans contain several illustrations and instructions for each step. These detailed plans make building your very own arcade cabinet quick and simple, even for the novice wood worker!

Plans include:

- Material and equipment list for cabinet
- Detailed cutout dimensions for all panels
- Panel layout for optimized material cutting



Full-size cutout templates

Save time and money by using full-size cutouts for the cabinet panels. No measuring required and no costly mistakes. Just glue, tape, or trace the templates onto the wood material and cut.

Ultimate Arcade I Product Specifications

The Ultimate Arcade I cabinet is available in two different styles to accommodate third party control panels.

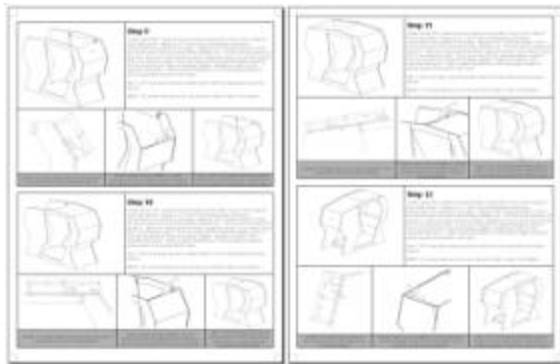
Cabinet Width:	26 3/8" [670 mm]
Cabinet Depth:	38" [965 mm]
Overall Cabinet Height:	75 3/8" [1915 mm]
Monitor Area Width:	25" [635 mm]
Monitor Area Height:	22 13/16" [579 mm]
Monitor Area Depth:	19 1/16" [484 mm]
X-Arcade Compatible:	Requires additional base
SlikStik Classic Compatible:	YES
SlikStik Fighter Compatible:	YES
SlikStik Co2 Compatible:	YES
SlikStik Quad Compatible:	YES

Ultimate Arcade Cockpit[®]

Play thousands of your favorite arcade and console games in one arcade game cabinet. Illustrated step-by-step plans to build the Ultimate cockpit and driving cabinet. Plans include cabinet and optional seat assembly.



ULTIMATE COCKPIT PLANS ORDER INFORMATION

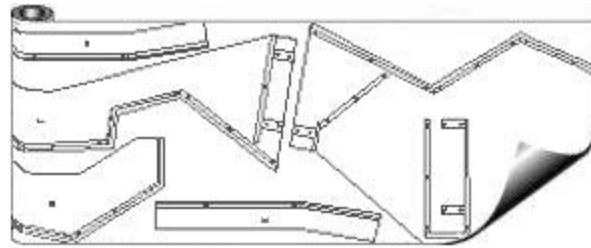


Illustrated Step-By-Step Plans

The step-by-step construction plans contain several illustrations and instructions for each step. These detailed plans make building your very own arcade cabinet quick and simple, even for the novice wood worker!

Plans include:

- Material and equipment list for cabinet
- Detailed cutout dimensions for all panels
- Panel layout for optimized material cutting



Full-size cutout templates

Save time and money by using full-size cutouts for the cabinet panels. No measuring required and no costly mistakes. Just glue, tape, or trace the templates onto the wood material and cut.

Ultimate Cockpit Product Specifications

Cabinet Width:	33 1/4" [845 mm]
Cabinet Length:	81 1/4" [2064 mm]
Cabinet Height:	57 9/16" [1462 mm]
Monitor Area Width:	32" [813 mm]
Monitor Area Height:	24 5/8" [625 mm]
Monitor Area Depth:	24 7/16" [621 mm]

ULTIMATE COCKPIT ORDERING INFORMATION

For more information, please visit:

www.MameRoom.com

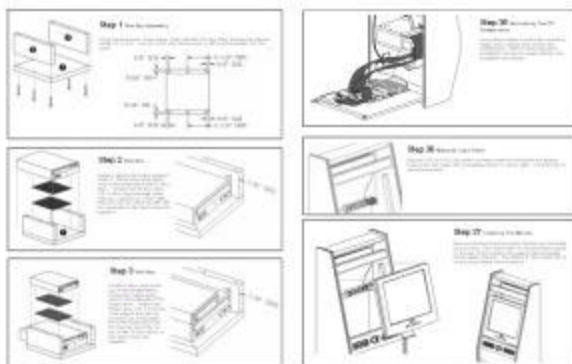


Virtual Music Jukebox

Build your very own digital jukebox!

Play thousands of your favorite digital music and video files in this unique, slim wall-mount jukebox.

VIRTUAL MUSIC JUKEBOX PRODUCT INFORMATION

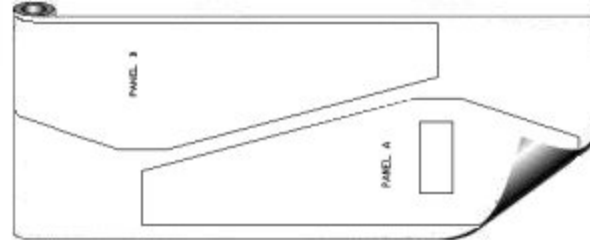


Illustrated Step-By-Step Plans

The step-by-step construction plans contain over 200 illustrations and instructions for each step. These detailed plans make building your very own jukebox quick and simple, even for the novice wood worker!

Plans include:

- Material and equipment list
- Detailed cutout dimensions for all panels
- Panel layout for optimized material cutting
- Electrical wiring
- Wall mounting instructions



Full-size cutout templates

Save time and money by using full-size cutouts for the cabinet panels. No measuring required and no costly mistakes. Just glue, tape, or trace the templates onto the wood material and cut.

Virtual Music Jukebox Product Specifications

Cabinet Width (W/O T-Molding):	1'-4 7/8" [429 mm]
Cabinet Depth (W/O T-Molding):	10 7/16" [265 mm]
Cabinet Height (W/O T-Molding):	3' [914 mm]
Monitor Size:	15" Flat Panel LCD
PC Access:	Side door entry

VIRTUAL MUSIC JUKEBOX ORDERING INFORMATION

For more information, please visit:

www.MameRoom.com